



MODEL OF EVALUATION OF THE SUSTAINABILITY PERFORMANCE IN BUILDING PROJECTS INTEGRATING LEAN, THROUGH THE DELPHI METHOD

Xavier Brioso and Fiorela Cruzado-Ramos

GETEC Research Group, Department of Engineering, Pontifical Catholic
University of Peru

Integration of Lean Construction and sustainability



IGLC 28

BERKELEY, CA 6-12 JULY 2020

28th ANNUAL CONFERENCE OF THE
INTERNATIONAL GROUP FOR LEAN CONSTRUCTION

Last Planner System



Reference: <http://www.leanconstructionenterprise.com/documentacion/last-planner>

Production management through Lean Construction seeks to improve productivity indicators

Environmental Management Plan



KPI's

Sustainability management systems seek to improve environmental indicators

Key performance indicators (KPIs)



IGLC 28

BERKELEY, CA 6-12 JULY 2020

28th ANNUAL CONFERENCE OF THE
INTERNATIONAL GROUP FOR LEAN CONSTRUCTION

***"If you can't measure it, you
can't improve it"***

Delphi Study



IGLC 28

BERKELEY, CA 6-12 JULY 2020

28th ANNUAL CONFERENCE OF THE
INTERNATIONAL GROUP FOR LEAN CONSTRUCTION



The Delphi method seeks to obtain reliable group opinion from a panel of experts who are asked their views individually on various topics in an interactive way.

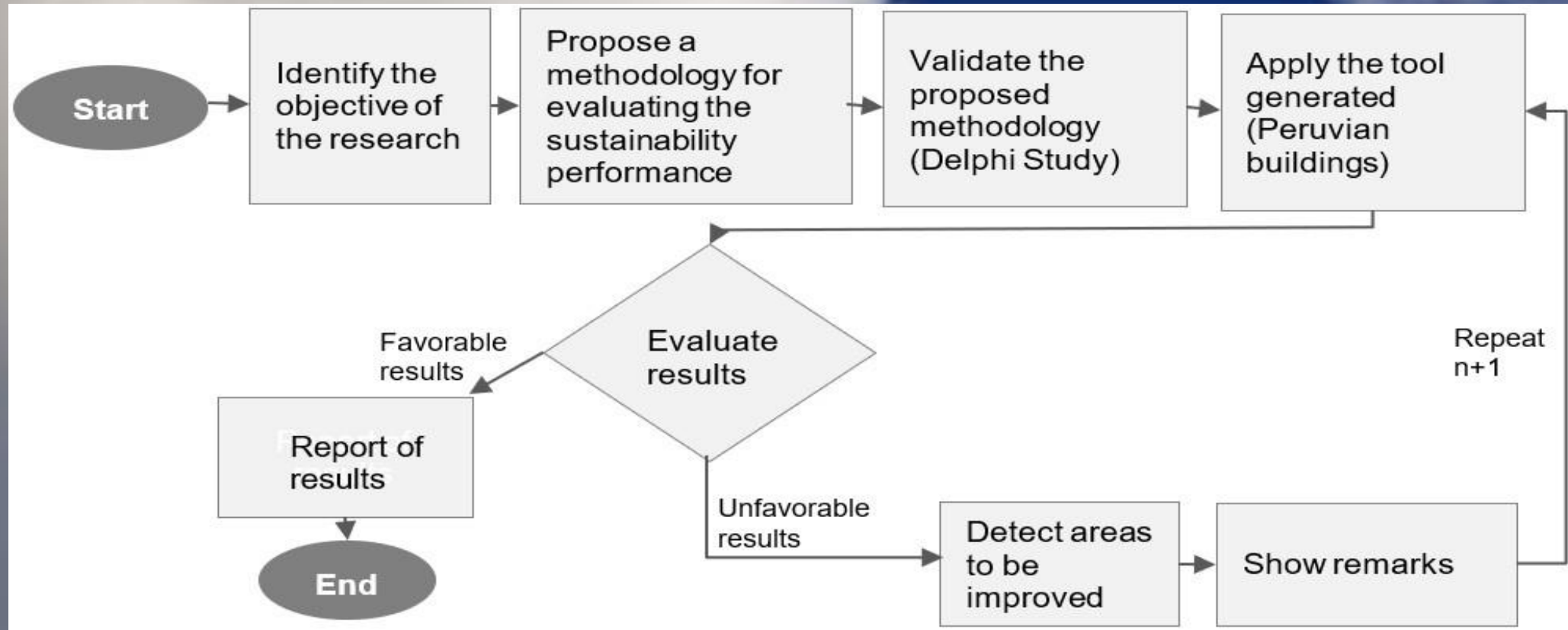
Proposal of performance evaluation model



IGLC 28

BERKELEY, CA 6-12 JULY 2020

28th ANNUAL CONFERENCE OF THE
INTERNATIONAL GROUP FOR LEAN CONSTRUCTION



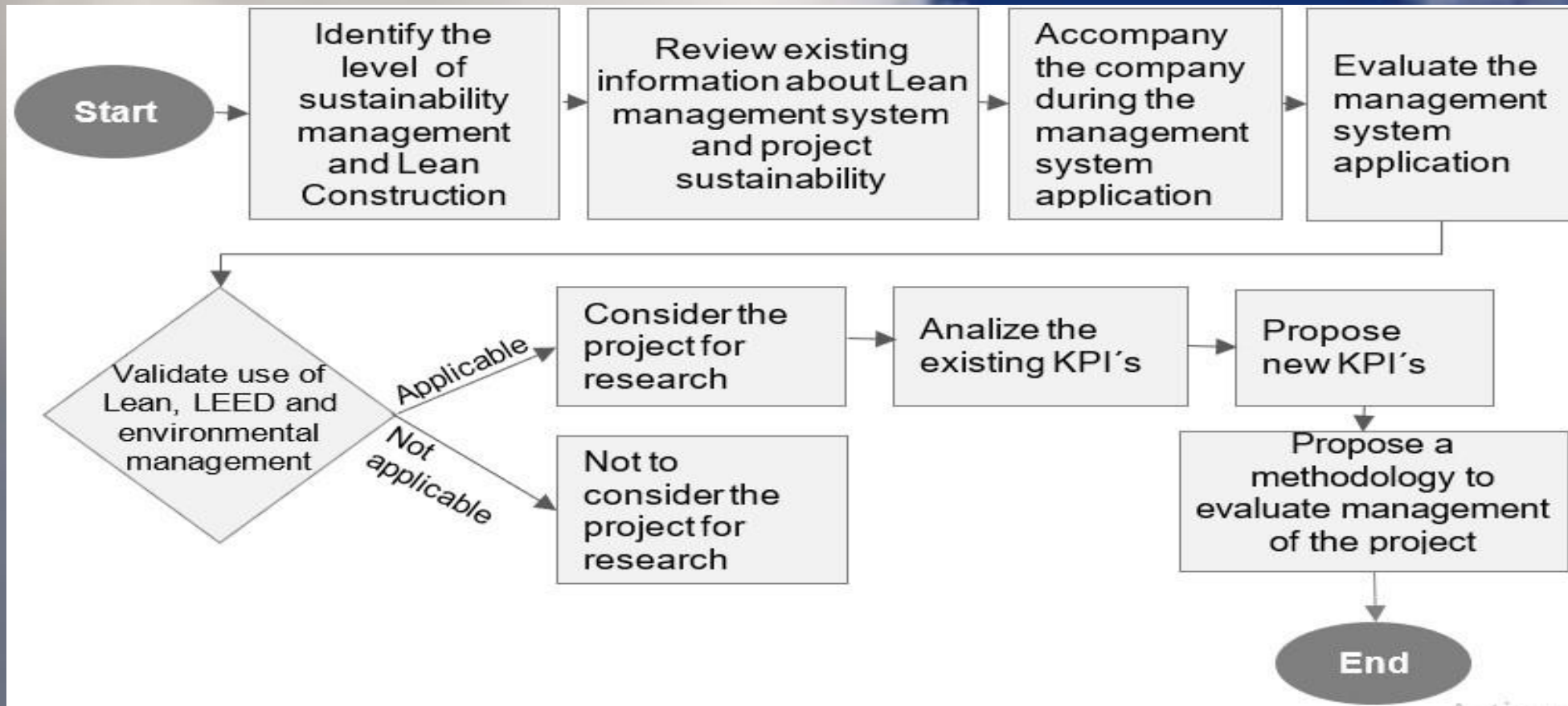
Model of evaluation of the sustainability performance



IGLC 28

BERKELEY, CA 6-12 JULY 2020

28th ANNUAL CONFERENCE OF THE
INTERNATIONAL GROUP FOR LEAN CONSTRUCTION



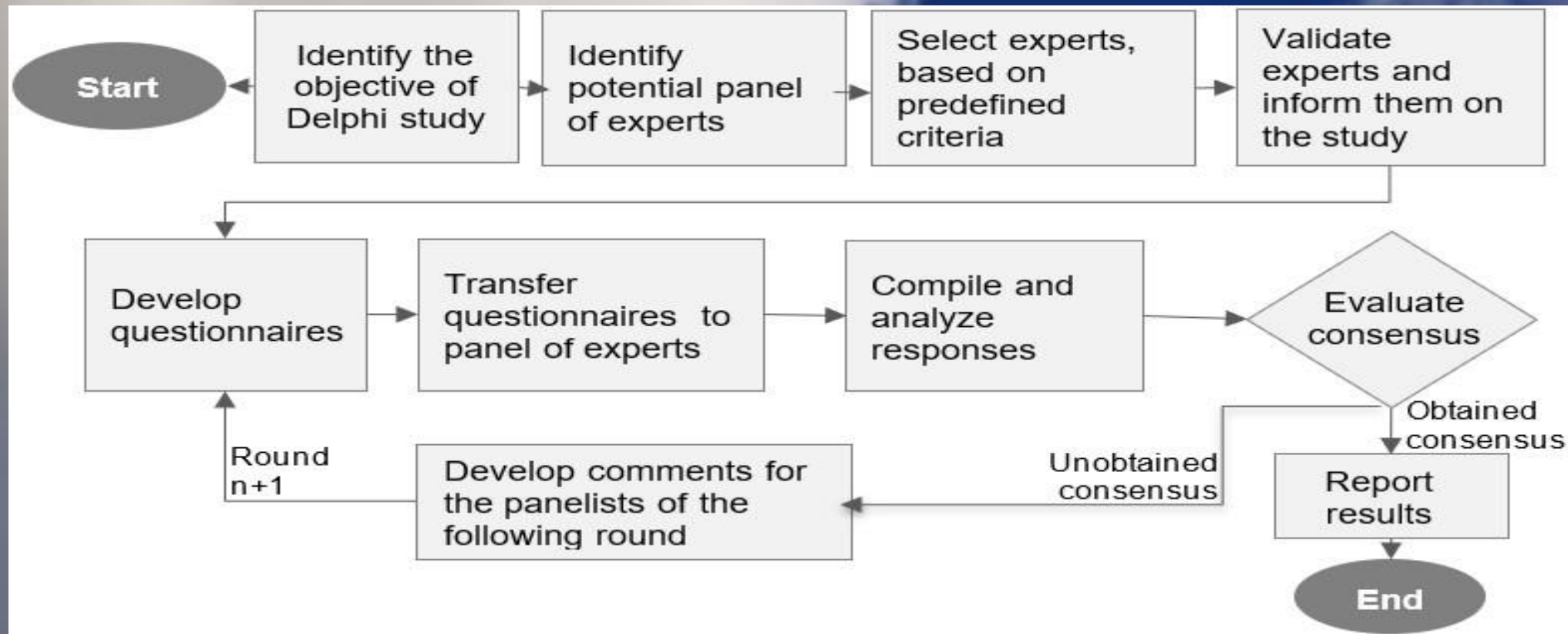
Validate the proposed methodology (Delphi Study)



IGLC 28

BERKELEY, CA 6-12 JULY 2020

28th ANNUAL CONFERENCE OF THE
INTERNATIONAL GROUP FOR LEAN CONSTRUCTION



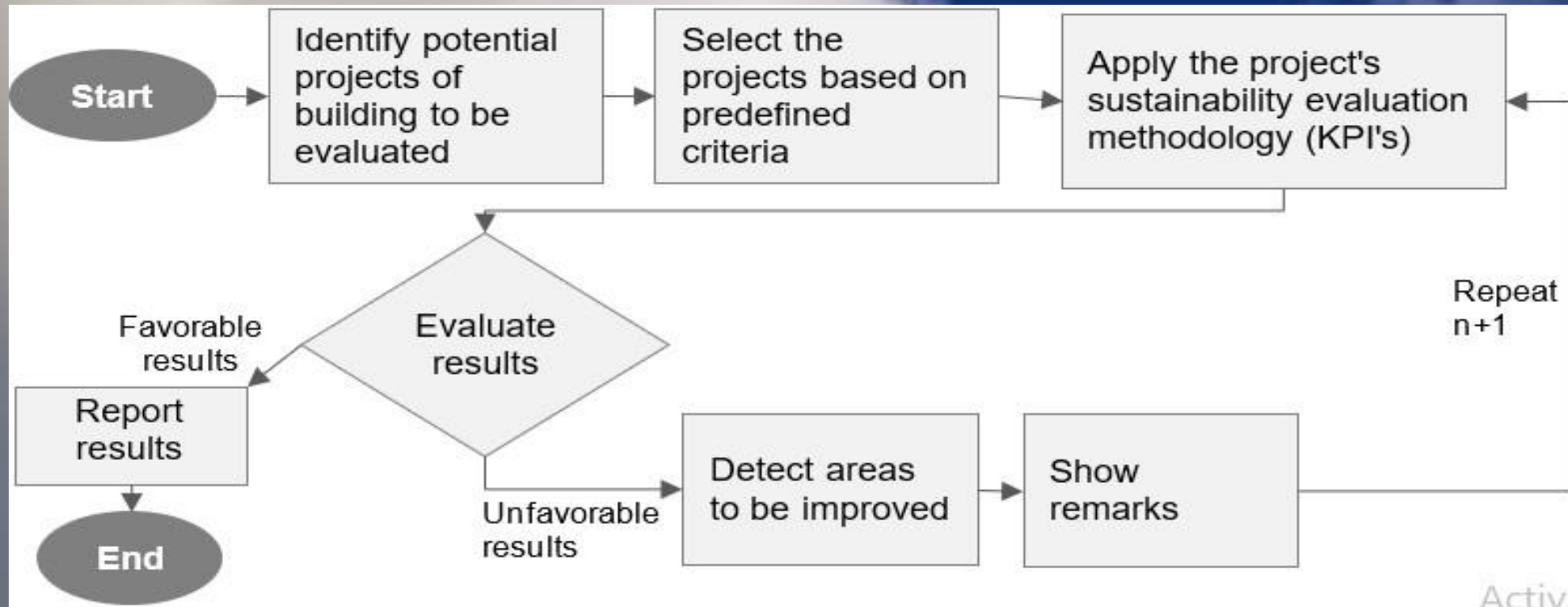
Apply the tool generated



IGLC 28

BERKELEY, CA 6-12 JULY 2020

28th ANNUAL CONFERENCE OF THE
INTERNATIONAL GROUP FOR LEAN CONSTRUCTION



Activa

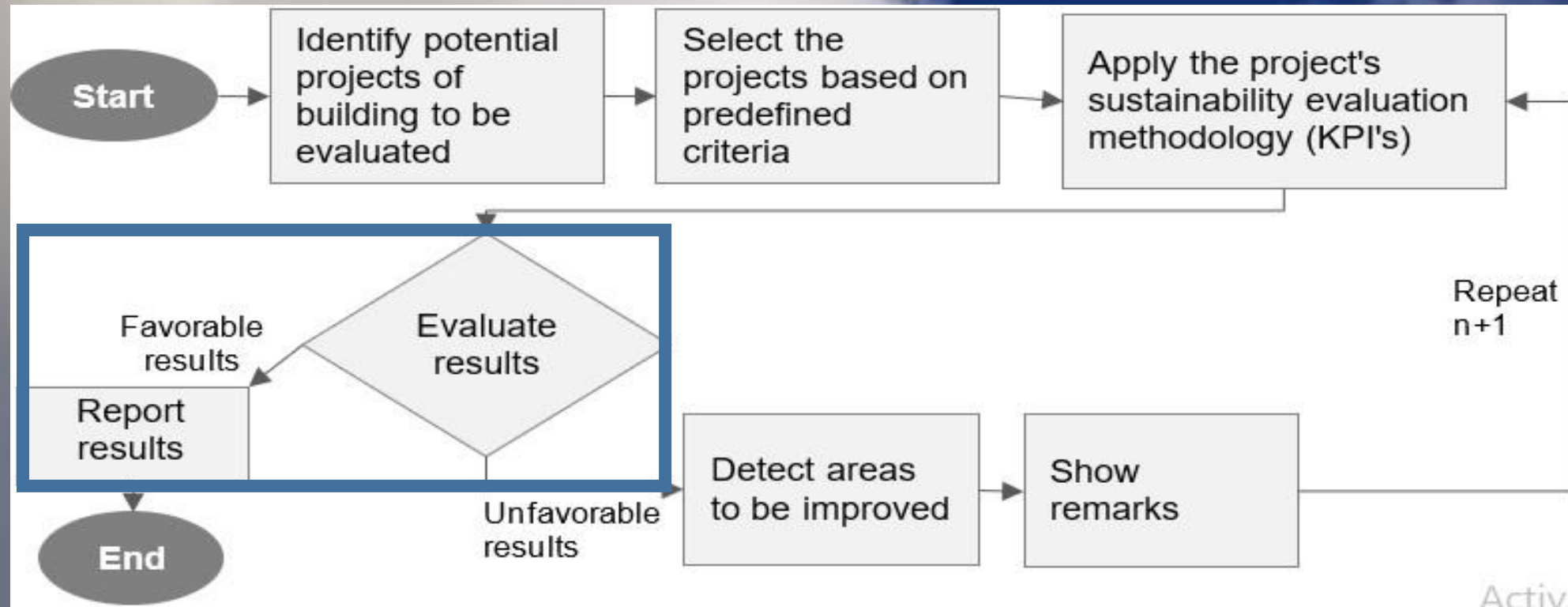
Evaluate and report results



IGLC 28

BERKELEY, CA 6-12 JULY 2020

28th ANNUAL CONFERENCE OF THE
INTERNATIONAL GROUP FOR LEAN CONSTRUCTION



Activa

Conclusions



IGLC 28

BERKELEY, CA 6-12 JULY 2020

28th ANNUAL CONFERENCE OF THE
INTERNATIONAL GROUP FOR LEAN CONSTRUCTION

- Regarding the proposed performance evaluation model, recent studies were found where the participation of stakeholders to validate the indicators proposed for the evaluation is fundamental, especially with the use of the Delphi method.
- In any case, the proposed model can be adapted to other collaborative decision-making methods of group and open participation.
- The main contribution of this document is that it meets the objective of providing a model for evaluating environmental sustainability performance through key performance indicators (KPI's) and the use of the Delphi method.

Thank you for your attention
Any questions ?